

Frozen section/ final diagnosis concordance, 1997-2010

Goal/Benchmark:

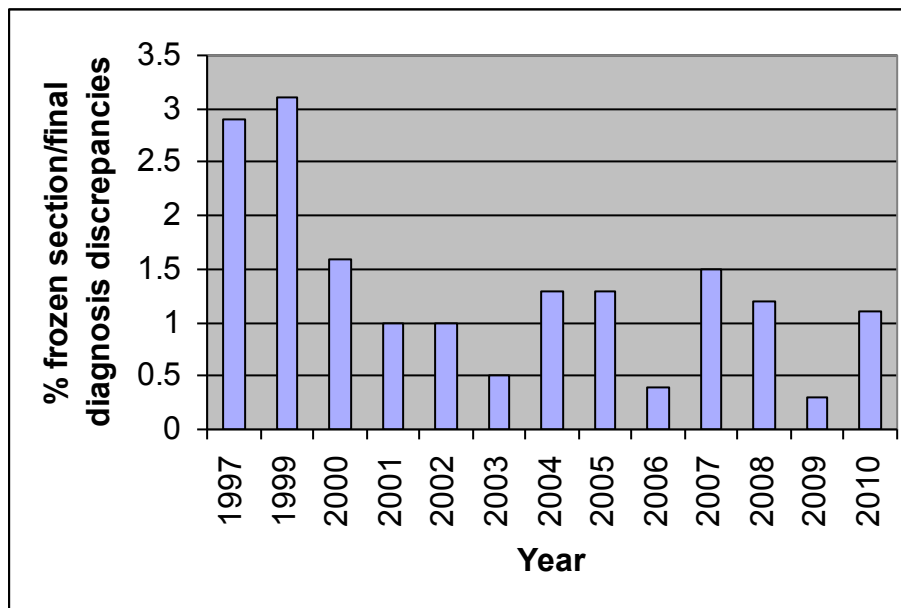
Various studies in the pathology literature (summarized in Oneson, *et al.* (1989), *Am. J. Surg. Pathol.* 13, 237-243) indicate frozen section/permanent section discrepancy rates of 1.1 to 9.6%. Some of these studies excluded “minor” errors.

Significance:

Monitoring of diagnostic concordance between our frozen section and final diagnoses is an important measure of our diagnostic accuracy. The frozen section diagnosis often is used intraoperatively to guide therapy.

Action Plan/Follow-up:

Accuracy of our frozen section diagnoses has been acceptable. We will continue to monitor.



Donald G. Ross, MD, Department of Pathology

January 13, 2011

Year	Cases	#FS	Discrepant %
1997	137	176	2.9
1999	102	131	3.1
2000	249	306	1.6
2001	525	683	1
2002	437	597	1
2003	274	369	0.5
2004	332	453	1.3
2005	265	385	1.3
2006	310	456	0.4
2007	256	413	1.5
2008	200	333	1.2
2009	204	313	0.3
2010	246	372	1.1

