

Turnaround time, specimen types other than gyn cytology, 1999-2010

Goal/Benchmark:

Goal is 95% of cases signed out in two days or less; College of American Pathologists' benchmark is "most" cases signed out in two days or less.

Significance:

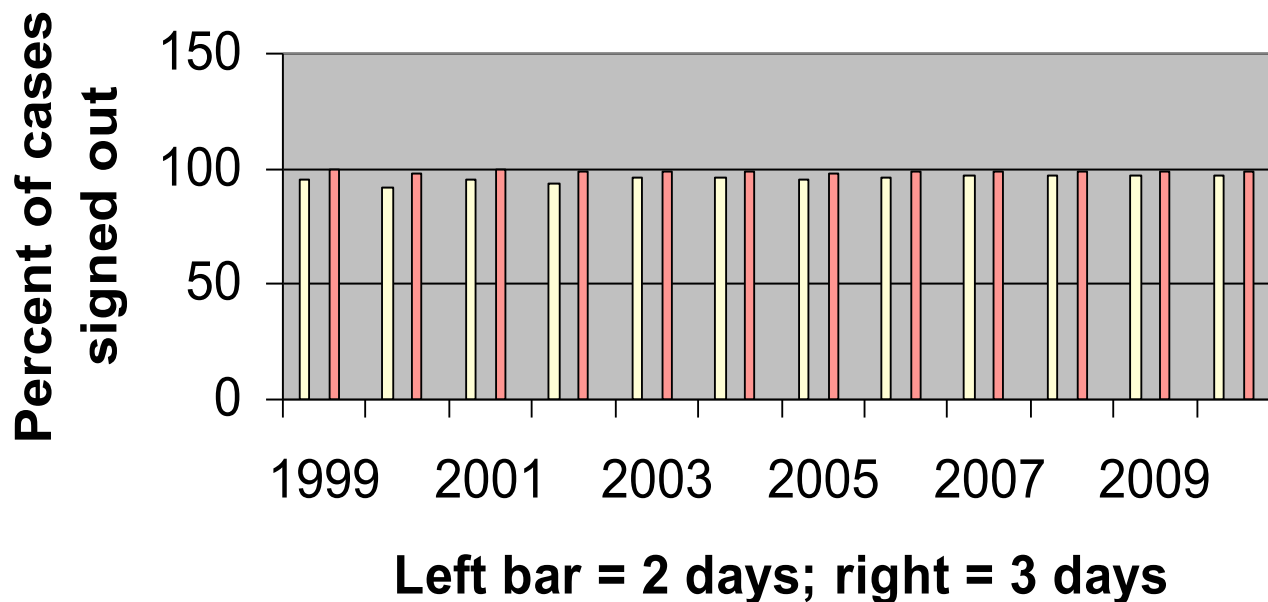
Patient treatment decisions often depend on pathologic diagnoses, so minimizing turnaround time is essential. Since time for specimen processing is on the order of 24 hours, minimum possible turnaround time is one day, and 60-70% of our cases are signed out in one day (data not shown).

Action Plan/Follow-up:

Turnaround is monitored on a monthly basis. In six years of turnaround time studies, the benchmark has always been achieved, and our more ambitious goal of 95% has usually been achieved.

We will continue to monitor and intervene as needed.

Turnaround Time, Specimen Types Other Than Gyn Cytology



Donald G. Ross, MD, Department of Pathology

January 14, 2011

Dates	% cases within two days	% cases within three days	N
1999	95	100	1007
2000	92	98	11362
2001	95	100	12317
2002	94	99	12604
2003	96	99	12414
2004	96	99	14121
2005	95	98	12913
2006	96	99	14586
2007	97.4	99	14074
2008	97.3	98.9	13641
2009	97.3	98.8	12137
2010	96.8	98.8	11334

