

Surgical Pathology Second Pathologist Review, 2005-2010

Goal/Benchmark:

5% of surgical pathology cases reviewed by a second pathologist.

Significance:

Review of interesting and/or difficult cases at by a second pathologist is an important method of error reduction.

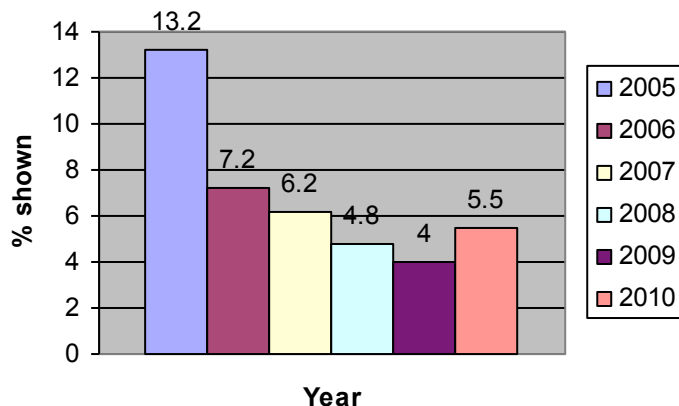
Action Plan/Follow-up:

Review rate has returned to acceptable level after two years slightly below the benchmark.

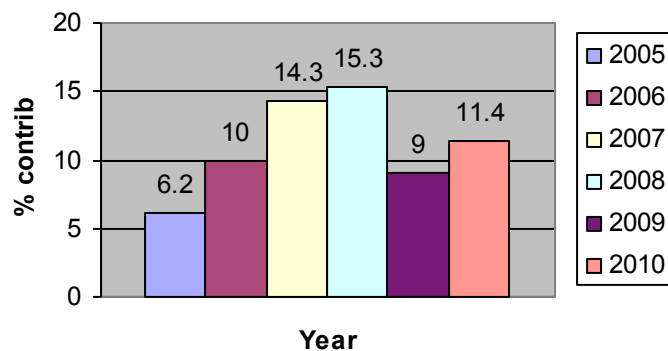
Comment:

This study is new for 2005. It replaces the previous surgical pathology case conference study. We believe the new methodology is a superior means of reviewing proposed diagnoses before they are signed out.

% Surg Path Cases Shown to 2nd Path



% Shown Cases with Contrib from 2nd Path



Year	N	% shown	% contrib
2005	11021	13.2	6.2
2006	11567	7.2	10.0
2007	11268	6.2	14.3
2008	11185	4.8	15.3
2009	9897	4.0	9.0
2010	9525	5.5	11.4

